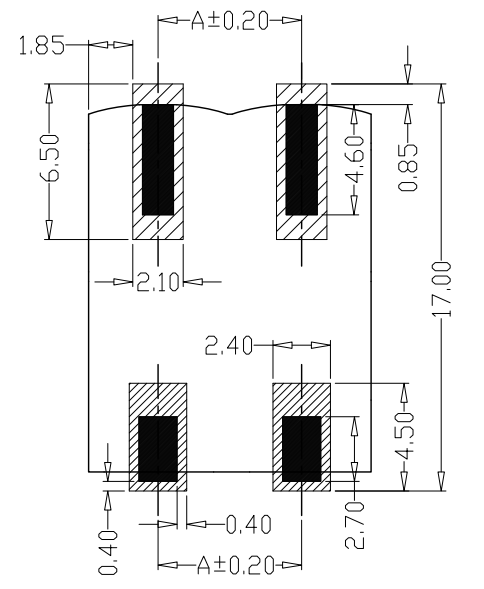
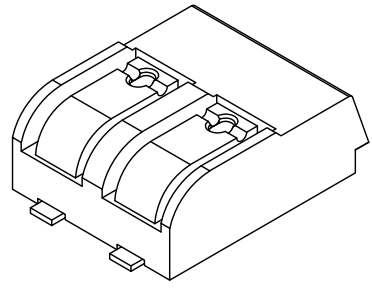
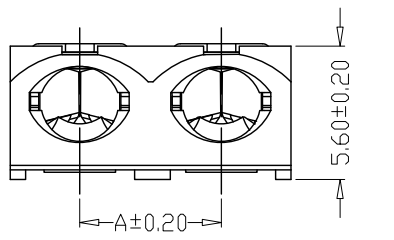
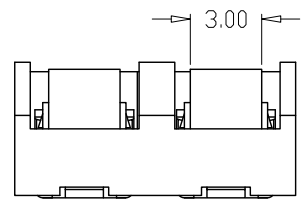
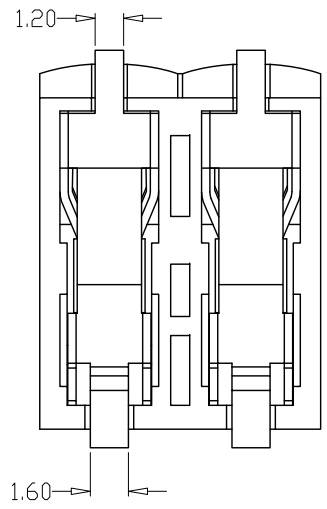
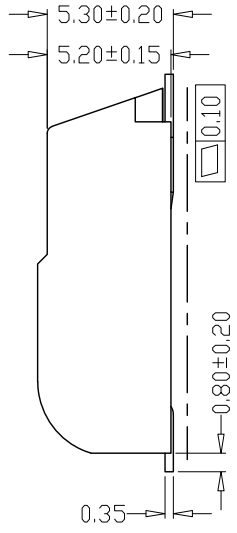
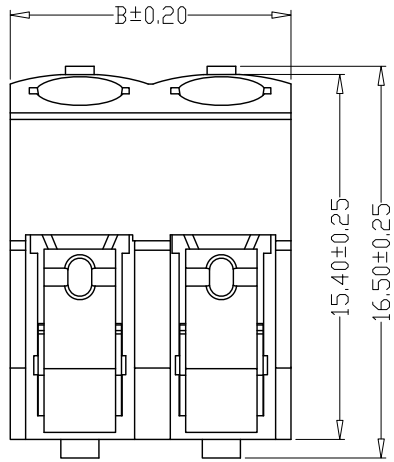


版本 REV.	日期 DATE	ECN NO.	变更内容 DESCRIPTION	制图 DRAWN



PCB LAYOUT



SPECIFICATIONS

- Current Rating: 10A AC, DC
- Voltage Rating: 300V AC, DC
- Temperatuer Range: -40°C~+125°C
- Contact Resistance: 20mΩ Max
- Insulation Resistance: 1000MΩ Min
- Withstanding Voltang: 1500V AC/minute
- Material: Wafer LCP, UL94V-0
PIN Phosphoric bronzes Tin-plated
- Can connect wire: AWG#16-20#

PIN	尺寸 (mm)	
	A	B
2061-01AWB	—	5.80
2061-02AWB	6.00	11.80
2061-03AWB	12.00	17.80

GENEAL TOLERANCE		制图 Mapping	张迎春 2022、09、12		料号 PART NO.	B60001-nAWB		版本 REV.	A
X±0.25	X°±2°	审核 Audit	钱岳生 2022、09、12		品名 TITLE	2061卧贴 WAFER SMT TYPE		页次 SHEET	1/1
.X±0.25	.X°±1°	核准 Approved	张名 2022、09、13		客户料号 CUTM. NO.				
.XXX±0.10	.XXX°±0.5°	单位 Units	MM	比例 SCALE	1:1				

乐清市宏一电子有限公司
YueQing HongYi Electronics Co., Ltd